

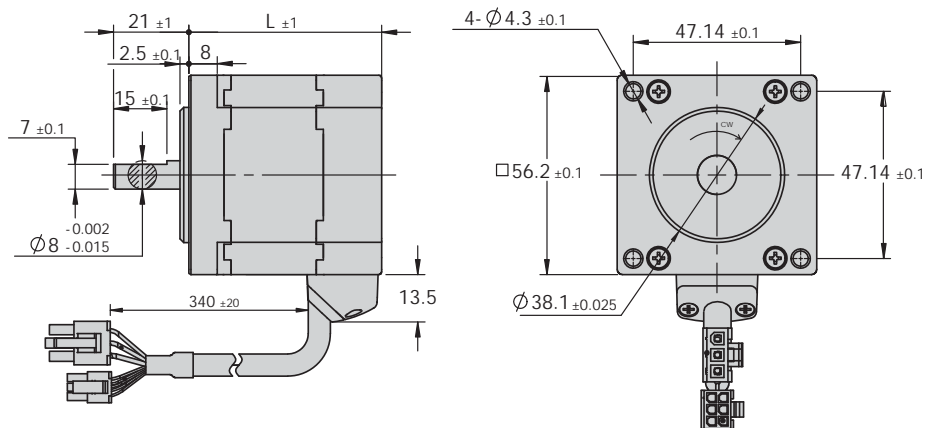
□ 57 BLDC Motor

■ Technical Specification

	Units	Type					
		57BL60L2	57BL60L4	57BL120L2	57BL120L4	57BL180L2	57BL180L4
Long	mm	54.5	54.5	82.5	82.5	120.5	120.5
Input power	VDC	24	48	24	48	24	48
Rated power	W	60	60	120	120	180	180
Phase number		3					
Rated speed	RPM	4000	4000	4000	4000	4000	4000
Max. speed	RPM	5000	5000	5000	5000	5000	5000
Rated torque	mNm	0.145	0.145	0.29	0.29	0.43	0.43
Max. torque	mNm	0.29	0.29	0.58	0.58	0.86	0.86
Rated current	Arms	3.2	1.6	6.9	3.0	10.5	4.5
Max. current	Arms	6.4	3.2	13.8	6.0	21.0	9.0
Voltage constant	Vrms/Krpm	3.08	6.35	3.00	6.40	3.00	6.45
Torque constant	Nm/Arms	0.045	0.090	0.042	0.097	0.041	0.096
Moment of inertia	10 ⁻⁴ kgm ²	0.148	0.148	0.279	0.279	0.456	0.456
Resistance	Ω	0.48	1.8	0.18	0.76	0.11	0.44
Inductance	mH	0.45	1.9	0.18	0.84	0.11	0.54
Sensor		Hall					
Ins.class		E					
Protective rating		IP40					
Operating temperature		0 ~ + 50°C					
Storage temperature		-25 ~ +70°C					
Operating RH		85% RH or below (noncondensing)					
Operating environment		Outdoor (no direct sunlight), no corrosive gas, no flammable gas, no oil mist, no dust					
Altitude		1000m or below					

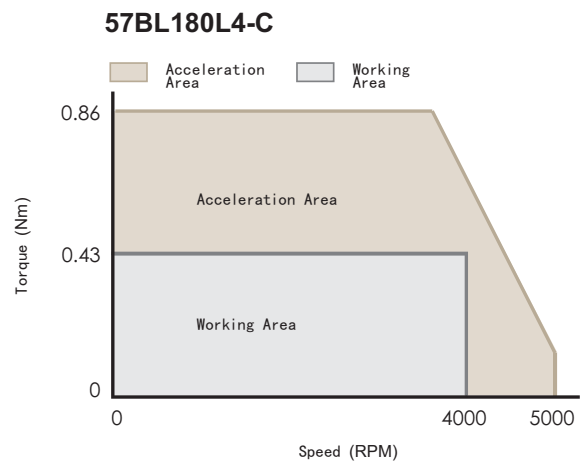
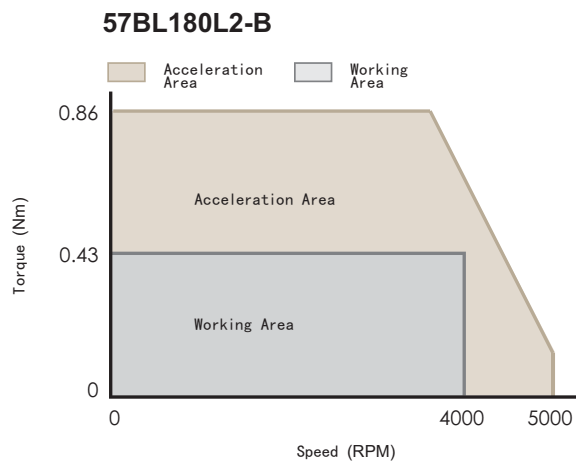
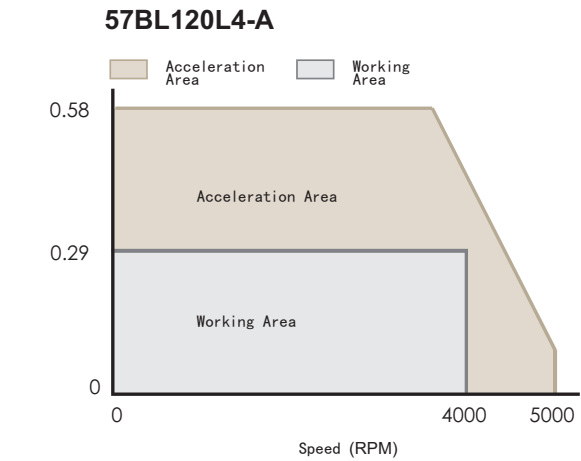
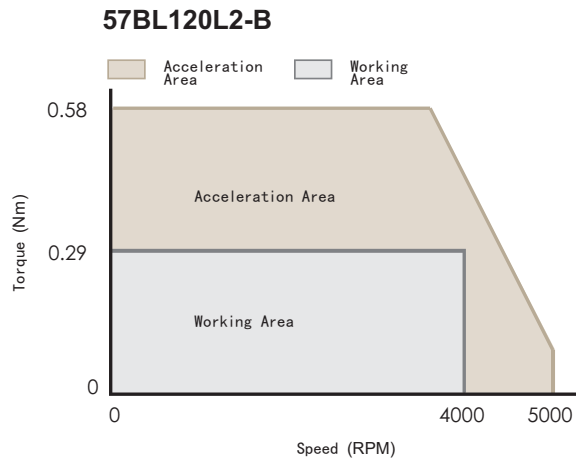
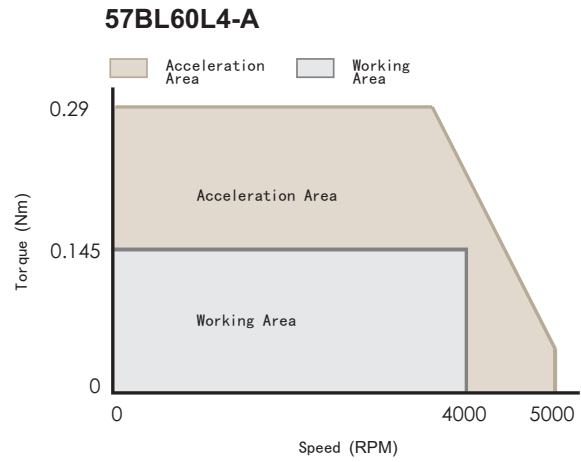
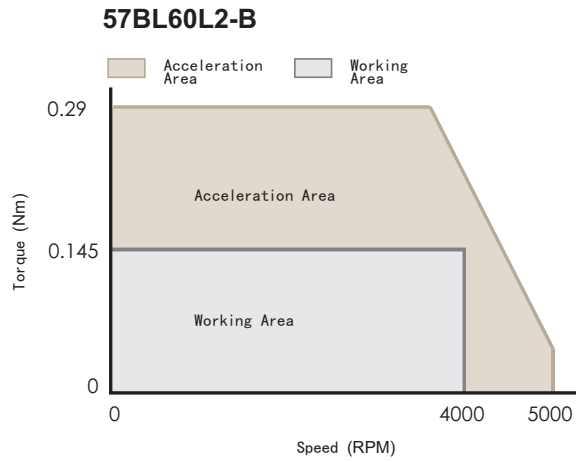
■ Mechanical Dimension

Series	L
	mm
57BL60	46
57BL120	82.5
57BL180	120.5



Unit: mm

Torque - Speed Features



Introduction of BLDC Motors

42 BLDC Motors

57 BLDC Motors

80 BLDC Motors

Introduction of BLDC Geared Motors

MGB042 - □A

MGB060 - □A

MGB080 - □A

Termination Specification